

WEB SITE

[Official Site]



www.padico.co.jp

New arrivals, product information, etc.

[English Site]



<https://www.padico.co.jp/en/>

Official English Site

[Video List]



<https://www.padico.co.jp/movie/>

Videos on how to create artworks and use products

SNS

[Official X]



 @PADICO_JP

New arrivals, discontinued products, campaigns, and short videos

[Resin craft Instagram]



 @jewellabyrinth

Instagram dedicated to resin crafts, including works and how to make them

[Official Instagram]



 @padico_official

Official Instagram dedicated to clay crafting tutorials and more.

[Official Facebook]



 @PADICOpadico

PADICO Official Facebook

[Official LINE]



 @padico

Information by fax or email and how to make your work

PADICO PADICO Co.,Ltd

PADICO HEAD OFFICE : 1-11-11-408 Jinguumae, Shibuya-ku, 150-0001 Tokyo Japan Tel. +81-3-6804-5171
FACTORY : 673-3 Jinba Gotemba, 412-0047, Shizuoka Japan Tel. +81-550-70-7030



Resin Liquid Pigments
Jewel Color Series
Pastel Color Set

Cotton Candy

★ Limited Edition ★

Rich & Bright
Pastel Color Set

2024.11.22
Release





Resin Liquid Pigments

Jewel Color Series

Pastel Color Set

Cotton Candy

The Jewel Color this year is
a set of bright and pretty pastel colors
mixed with white.

Bold Pastel Shades

Bright colors like cotton candy
cause the desire to make cute goods!



Cafe
Jewel Color

The colorful drinks are made with Pastel Jewel Color "Cotton Candy".



- Orange Sherbet
- Peach Milk
- Melon Sherbet
- Strawberry Milk
- Grape Mousse
- Melon Sherbet
- Peach Milk
- Strawberry Milk
- Lemon Sherbet
- Peach Milk
- Melon Sherbet
- Orange Sherbet
- Lemon Sherbet
- Melon Sherbet
- Grape Mousse
- Melon Sherbet
- Orange Sherbet

**Antique style accessories
in retro colors**

Even pastel colors can be expressed in retro colors depending on the arrangement.

Created by Itsumi



Rainbow juice
with lovely pastel colors

- From top to bottom,
- Peach Milk
- Strawberry Milk
- Orange Sherbet
- Lemon Sherbet
- Melon Sherbet
- Soda Float
- Grape Mousse



To express chai, milk tea,
cocoa and chocolate drinks

Milk Tea

Milk Cocoa

Cotton Candy



To express fruits

- Melon Sherbet
- Cassis Mousse
- Melon Sherbet
- Strawberry Milk
- Melon Sherbet
- Orange Sherbet
- Lemon Sherbet
- Grape Mousse



Even cutest when made
with your fave color!

- Lemon Sherbet
- Orange Sherbet
- Melon Sherbet
- Ramune Float
- Soda Float
- Blueberry Mousse
- Blueberry Mousse
- Cassis Mousse
- Grape Mousse
- Peach Milk
- Peach Milk
- Strawberry Milk
- Lemon Sherbet
- Ramune Float
- Melon Sherbet
- Grape Mousse
- Cassis Mousse



Peach Milk

Bright & Playful Pastel Pink



Strawberry Milk

Soft Pastel Red
with a Touch of Elegance



Orange Sherbet

Bright, Vitamin-Rich Pastel Orange



Lemon Sherbet

Sunny, Soft Pastel Yellow, Ideal for a Smily Touch

Cotton Candy



Melon Sherbet

Bright and Charming Pastel Green



Ramune Float

Charming Soft Aqua with a Touch of Mint



Soda Float

Bright and Gentle Pastel Blue



Blueberry Mousse

Soft and Elegant Pastel Blue





Grape Mousse

Pastel Purple,
Perfect for Resin Flowers



Cassis Mousse

Delicate Pastel
Red-Violet_A Sweet Intermediate Hue



Milk Tea

Creamy Opaque Beige – Inspired by Milk Tea and Coffee



Milk Cocoa

Opaque Brown – Ideal for Chocolate Creations





Cotton Candy

Rich & Brght,
Bold Pastel Shades

Launch Date: November 22, 2024 (Friday)

★ Limited Edition ★

A Set of 12 Bright
and Adorable Pastel Colors



Features

- ★ Pastel Colors with a Hint of White
- ★ Bold Pastel Shades
- ★ Bright and Fancy Colors
- ★ A set of 12 bright pastel colors in 2ml packs for multicolor use

Easy to read letters!
Colorants compatible
with character molds



Dedicated nozzle
to avoid dripping spills

Mixes Smoothly
with Resin

White-Infused
Pastel colors

2ml mini bottle



Jewel Color "Cotton Candy" Pastel Color Set

3,200 JPY without tax

#403402

JAN: 4902498734022

1 pc./2ml each x 12 colors / Gross weight: 113g
Bottle size: φ 18mm × H44mm / Package size: W162 × D25 × H163mm

Common to all colors/components: organic solvents, synthetic resins, titanium dioxide, organic pigments
Use: Resin coloring liquid / Warning: Fire strictly prohibited / Ages: 15 and up
Storage conditions: 0-25°C, Out of direct sunlight
Fire and Disaster Management Act (Japan) / Class-4 Petroleum Dangerous Grade 3

Precautions for use

- Due to the characteristics of the product, the liquid will separate, so shake the bottle well before use.
- UV-LED resin will not cure if the colorant is too thick. Use 1~2 drops of colorant per 1g of UV-LED resin.
- For thicker pieces, avoid curing a large amount of UV-LED resin all at once. Instead, apply the resin in several thin layers, curing each layer separately. Extend the curing time slightly beyond the recommended duration for each layer to ensure even hardening.

[Materials that can be mixed]

- UV resin, LED resin, 2-component resin*
* Coloration may change depending on the 2-component resin.
- △ Silicone, urethane foam resin
* Some materials may inhibit silicone curing, so please perform a pre-curing check beforehand.
- × Clay, water, ethanol, water-based varnish, oil-based varnish

Lily of Bell Retro Style Earrings

Bright Pastel Colors
with a Retro Touch - Perfectly
Charming and Stylish



Materials / Tools

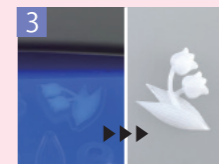
- "Sun Drop" UV-LED Resin
- Silicone mold [Flower Cabochon]
- Jewel Color for UV & UV-LED Curing Resin [Peach Milk, Melon Sherbet, White]
- Mixing Stick
- Jewel Color Mixing Palette [S, mini]
- UV-LED Light
- Openwork parts ● Round Jump Rings ● T pins
- Earring parts ● Adhesive ● Wire Cutter
- Beads of your choice ● Flat Nose Plier ● Round Nose Plier



1 Put some drops of white into UV-LED Resin and mix it well with a stick.



2 Put the white resin into the PADICO Lily of Bell mold (semi-3D). Fill the resin to the edge of the mold with a needle to avoid air bubbles.



3 Cure by UV-LED light and remove it from the mold. Make another one of the same.



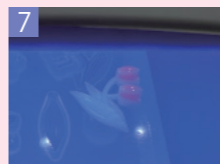
4 Put resin and "Peach Milk" in a mini palette and mix well to make pink resin.



5 Put resin and "Melon Sherbet" in a mini palette and mix well to make green resin.



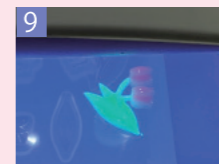
6 Apply pink resin to the flower, being careful not to let the liquid drip off.



7 Cure by UV-LED light.



8 Apply green resin to leaves, being careful not to let the liquid drip off.



9 Cure firmly with UV-LED light.



10 Attach the lily of Bell parts to the openwork parts with glue.



11 Put the beads on the bottom side.



12 Connect to earring clasps with a round jump ring.

Latte Art Style Earrings

Milk tea shade is also perfect for a coffee milk color!



Materials / Tools

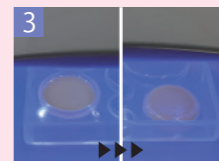
- "Sun Drop" UV-LED Resin
- UV-LED Coating Resin "Star Drop Gloss"
- Soft Mold [Round Plate]
- Jewel Color for UV & UV-LED Curing Resin [Milk Tea, Milk Cocoa, White]
- Mixing Stick
- Jewel Color Mixing Palette [S, mini]
- UV-LED Light
- Earing parts
- Adhesive



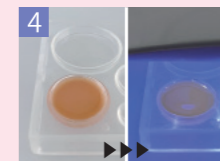
Put some drops of Milk Tea colorant into UV-LED Resin to make darker and mix it well with a stick.



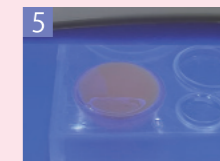
Fill the 20 mm size round mold with tea colored resin to the height of one-third of the entire mold.



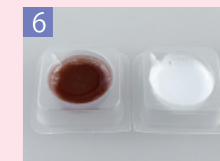
Cure with UV-LED light. Turn over and further expose to light to firmly cure.



Fill the resin to the height of two-third of the entire mold. Cure firmly with a longer light exposure.



Fill the resin to the top of the mold and let it cure for a long time. Remove it from the mold. Make another one of the same.



Make brown resin with "Milk Cocoa" colorant. Then make white colored resin.



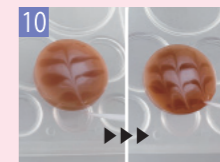
Apply a thin layer of the tea colored resin_step (1) to the entire surface of the part (5).



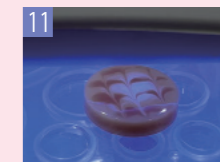
Place white resin from step (6) on top of it in the center. Mix it with a stick so that it spreads outward to create a gradation.



Quickly draw four horizontal lines on top of it with Step(6) brown resin.



With a stick, quickly draw a pattern as if drawing a line from the top to the center, left, and right.



Cure it under the UV-LED lamp.



Apply a thin layer of coating resin on the surface and cure it. Attach earring clasps to the back side with adhesive.